

FLORIDA DEPARTMENT OF ECONOMIC OPPORTUNITY, BUREAU OF WORKFORCE
STATISTICS AND ECONOMIC RESEARCH (WSER)

Summary of Employment, Demographics, and Commuting Patterns for Brevard County, Florida



May 2021

Contents

Labor Shed Analysis	3
OnTheMap, Census Bureau	3
Florida Department of Economic Opportunity, Bureau of Workforce Statistics and Economic Research (WSER)	3
Executive Summary	4
People QuickFacts	5
Business and Geography QuickFacts.....	7
Labor Force, Employment, and Unemployment	7
Population	7
Where Workers Work in Brevard County	8
Work Area Profile Summary	9
Work Area Profile Summary - Demographics	10
Where Workers Live in Brevard County.....	11
Home Area Profile Summary	12
Home Area Profile Summary - Demographics	13
Labor Inflow/Outflow Map	14
Labor Inflow/Outflow Summary	15
Work Destination Summary	17
Home Destination Summary	18

Labor Shed Analysis

A labor shed analysis is defined as where workers work and where workers live relative to a user-defined selection area. This analysis helps to determine where a labor market draws its commuting workers. Labor shed studies can draw comparisons between various geographies including state, Congressional District, Metropolitan Statistical Area (MSA), county, Workforce Investment Area (WIA), Zip Code, and Census tract. By indicating how many of the selection area workers work outside the area, labor sheds can help identify potential pools of workers who would be available for work in the user-defined area.

Labor shed studies provide economic developers and existing or prospective employers a tool to understand the local labor market and make informed expansion and site selection decisions. In addition, labor shed studies can help indicate potential impacts from environmental, social, or economic incidents.

OnTheMap, Census Bureau

OnTheMap is a mapping and reporting tool developed by the U.S. Census Bureau showing employment and home locations of workers with companion reports for user-defined areas. It is the first synthetic data product released by the Census Bureau. OnTheMap is an important tool for Florida to perform labor inflow/outflow analyses and provide commuting data to planning and economic development agencies as well as Regional Workforce Boards. OnTheMap data is also used by the Department of Economic Opportunity to help quantify natural disaster impacts for emergency management agencies based on where workers live and where they work.

OnTheMap integrates existing data from state-supplied administrative records on workers and employers with existing federal censuses, surveys, and other administrative records. The state Labor Market Information (LMI) agencies supply key data from unemployment wage records and from businesses each quarter. The Census Bureau merges the state-supplied data with current demographic information to produce the data found in OnTheMap. By combining data from different administrative sources, censuses, and surveys, the Census Bureau produces local employment information that was not previously available.

Florida Department of Economic Opportunity, Bureau of Workforce Statistics and Economic Research (WSER)

The Florida Department of Economic Opportunity, Bureau of Workforce Statistics and Economic Research (WSER), produces, analyzes, and distributes labor statistics to improve economic decision making. These data are produced as part of the federal/state cooperative statistical program with the U.S. Department of Labor, Bureau of Labor Statistics, and the Employment and Training Administration.

Executive Summary

The analysis of workforce and demographic characteristics, including commuting patterns of Brevard County was conducted to provide economic data on the population and labor force living or working in the county. The report is useful for detailing where workers work and live in order to align resources. This report includes population, labor force, and demographics for Brevard County.

Workers employed in Brevard County are clustered in the Health Care and Social Assistance (15.4%) and Manufacturing (12.1%) industries. Workers living in Brevard County are concentrated in the Health Care and Social Assistance (14.1%) and Retail Trade (11.8%) industries.

A detailed examination of commuting patterns for Brevard County shows that the county has a net outflow of -23,053 workers. Using the latest annual Census data available, there were 200,614 workers employed in Brevard County and 223,667 workers living in Brevard County. Of the workers who lived in the county, 76,994 workers (34.4%) were employed outside the county.

With 34.4% of workers who reside in Brevard County employed outside the county, Brevard County was ranked 9th of 67 for the lowest outflow rankings among Florida counties. Leon (20.9%) had the lowest outflow rate, followed by Miami-Dade (22.0%) and Duval (25.5%). Glades (85.1%), Jefferson (82.2%), and Union (79.6%) had the highest worker outflow rates.

Of the 76,994 Brevard County workers employed outside the county, the top destination counties are Orange County (20,068 workers), Hillsborough County (4,842 workers), and Seminole County (4,780 workers). Of the 53,941 Brevard County workers living outside the county, the top origin counties are Orange County (8,141 workers), Volusia County (3,974 workers), and Indian River County (3,650 workers).

People QuickFacts

	Brevard County	Florida	United States
Population			
Population estimates, July 1, 2019, (V2019)	601,942	21,477,737	328,239,523
Population estimates base, April 1, 2010, (V2019)	543,372	18,804,564	308,758,105
Population, percent change - April 1, 2010 (estimates base) to July 1, 2019, (V2019)	10.8%	14.2%	6.3%
Population, Census, April 1, 2010	543,376	18,801,310	308,745,538
Population, Census, April 1, 2020	X	21,538,187	331,449,281
Age and Sex			
Persons under 5 years, percent	4.6%	5.3%	6.0%
Persons under 18 years, percent	18.1%	19.7%	22.3%
Persons 65 years and over, percent	24.2%	20.9%	16.5%
Female persons, percent	51.1%	51.1%	50.8%
Race and Hispanic Origin			
White alone, percent	83.2%	77.3%	76.3%
Black or African American alone, percent(a)	10.8%	16.9%	13.4%
American Indian and Alaska Native alone, percent(a)	0.5%	0.5%	1.3%
Asian alone, percent(a)	2.6%	3.0%	5.9%
Native Hawaiian and Other Pacific Islander alone, percent(a)	0.1%	0.1%	0.2%
Two or More Races, percent	2.8%	2.2%	2.8%
Hispanic or Latino, percent(b)	10.9%	26.4%	18.5%
White alone, not Hispanic or Latino, percent	73.8%	53.2%	60.1%
Population Characteristics			
Veterans, 2015-2019	65,436	1,440,338	18,230,322
Foreign born persons, percent, 2015-2019	8.5%	20.7%	13.6%
Housing			
Housing units, July 1, 2019, (V2019)	282,833	9,673,682	139,684,244
Owner-occupied housing unit rate, 2015-2019	74.3%	65.4%	64.0%
Median value of owner-occupied housing units, 2015-2019	\$196,400	\$215,300	\$217,500
Median selected monthly owner costs -with a mortgage, 2015-2019	\$1,361	\$1,503	\$1,595
Median selected monthly owner costs -without a mortgage, 2015-2019	\$451	\$505	\$500
Median gross rent, 2015-2019	\$1,068	\$1,175	\$1,062
Building permits, 2020	4,739	164,074	1,471,141

Legend

The vintage year (e.g., V2019) refers to the final year of the series (2010 thru 2019). Different vintage years of estimates are not comparable.

Fact Notes

(a) Includes persons reporting only one race

(b) Hispanics may be of any race, so also are included in applicable race categories

Source: U.S. Census Bureau, State & County QuickFacts.

People QuickFacts (continued)

	Brevard County	Florida	United States
Families & Living Arrangements			
Households, 2015-2019	230,417	7,736,311	120,756,048
Persons per household, 2015-2019	2.51	2.65	2.62
Living in same house 1 year ago, percent of persons age 1 year+, 2015-2019	85.6%	84.5%	85.8%
Language other than English spoken at home, percent of persons age 5 years+, 2015-2019	10.6%	29.4%	21.6%
Computer and Internet Use			
Households with a computer, percent, 2015-2019	92.1%	91.5%	90.3%
Households with a broadband Internet subscription, percent, 2015-2019	87.2%	83.0%	82.7%
Education			
High school graduate or higher, percent of persons age 25 years+, 2015-2019	92.2%	88.2%	88.0%
Bachelor's degree or higher, percent of persons age 25 years+, 2015-2019	30.2%	29.9%	32.1%
Health			
With a disability, under age 65 years, percent, 2015-2019	10.5%	8.6%	8.6%
Persons without health insurance, under age 65 years, percent	13.4%	16.3%	9.5%
Economy			
In civilian labor force, total, percent of population age 16 years+, 2015-2019	54.2%	58.5%	63.0%
In civilian labor force, female, percent of population age 16 years+, 2015-2019	49.9%	54.3%	58.3%
Total accommodation and food services sales, 2012 (\$1,000)(c)	902,562	49,817,925	708,138,598
Total health care and social assistance receipts/revenue, 2012 (\$1,000)(c)	3,727,631	124,061,425	2,040,441,203
Total manufacturers shipments, 2012 (\$1,000)(c)	5,441,890	96,924,106	5,696,729,632
Total merchant wholesaler sales, 2012 (\$1,000)(c)	1,846,458	252,626,608	5,208,023,478
Total retail sales, 2012 (\$1,000)(c)	6,527,527	273,867,145	4,219,821,871
Total retail sales per capita, 2012(c)	\$11,927	\$14,177	\$13,443
Transportation			
Mean travel time to work (minutes), workers age 16 years+, 2015-2019	25.2	27.8	26.9
Income & Poverty			
Median household income (in 2019 dollars), 2015-2019	\$56,775	\$55,660	\$62,843
Per capita income in past 12 months (in 2019 dollars), 2015-2019	\$32,176	\$31,619	\$34,103
Persons in poverty, percent	9.4%	12.7%	10.5%

Legend

The vintage year (e.g., V2019) refers to the final year of the series (2010 thru 2019). Different vintage years of estimates are not comparable.

Fact Notes

(c) Economic Census - Puerto Rico data are not comparable to U.S. Economic Census data

Source: U.S. Census Bureau, State & County QuickFacts.

Business and Geography QuickFacts

	Brevard County	Florida	United States
Businesses			
Total employer establishments, 2019	14,516	574,51	7,959,103
Total employment, 2019	189,379	8,860,04	132,989,428
Total annual payroll, 2019 (\$1,000)	8,888,790	426,908,31	7,428,553,593
Total employment, percent change, 2018-2019	0.9%	2.2%	1.6%
Total nonemployer establishments, 2018	46,350	2,388,050	26,485,532
All firms, 2012	44,670	2,100,187	27,626,360
Men-owned firms, 2012	22,885	1,084,885	14,844,597
Women-owned firms, 2012	16,878	807,817	9,878,397
Minority-owned firms, 2012	8,913	926,112	7,952,386
Nonminority-owned firms, 2012	34,184	1,121,749	18,987,918
Veteran-owned firms, 2012	4,815	185,756	2,521,682
Nonveteran-owned firms, 2012	37,709	1,846,686	24,070,685
Geography			
Population per square mile, 2010	535.0	350.6	87.4
Land area in square miles, 2010	1,015.66	53,624.76	3,531,905.43
FIPS Code	12009	12	1

Source: U.S. Census Bureau, State & County QuickFacts.

Labor Force, Employment, and Unemployment

	April 2021				April 2020			
	LABOR	EMPLOY-	UNEMPLOYMENT		LABOR	EMPLOY-	UNEMPLOYMENT	
	FORCE	MENT	LEVEL	RATE (%)	FORCE	MENT	LEVEL	RATE (%)
Workforce Region 13	291,900	278,878	13,022	4.5	271,094	235,320	35,774	13.2
Brevard County	291,900	278,878	13,022	4.5	271,094	235,320	35,774	13.2
Florida	10,357,000	9,825,000	532,000	5.1	9,718,000	8,369,000	1,349,000	13.9
United States	160,379,000	151,160,000	9,220,000	5.7	155,830,000	133,326,000	22,504,000	14.4

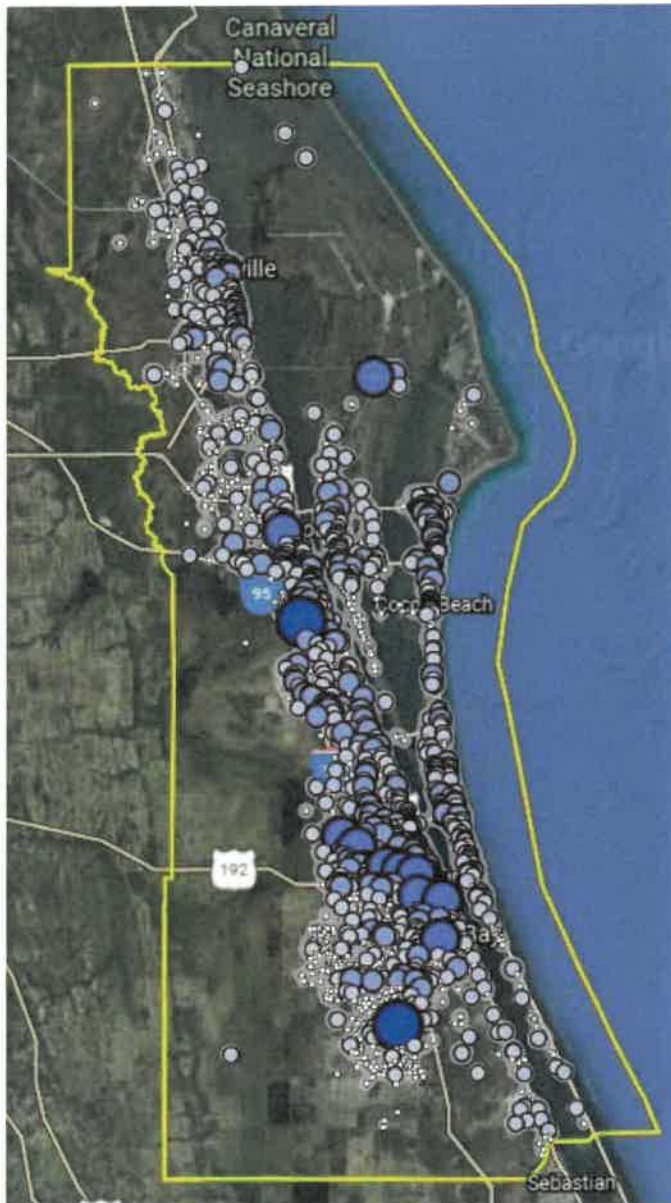
Source: U.S. Department of Labor, Bureau of Labor Statistics, Local Area Unemployment Statistics.

Population

	Population Estimate (as of July 1)							
	2012	2013	2014	2015	2016	2017	2018	2019
Workforce Region 13	546,966	550,255	555,548	565,746	576,874	587,769	595,203	601,942
Brevard County	546,966	550,255	555,548	565,746	576,874	587,769	595,203	601,942
Florida	19,297,822	19,545,621	19,845,911	20,209,042	20,613,477	20,963,613	21,244,317	21,477,737
United States	313,830,990	315,993,715	318,301,008	320,635,163	322,941,311	324,985,539	326,687,501	328,239,523

Source: U.S. Census Bureau, Population Division.

Where Workers Work in Brevard County



Source: U.S. Census Bureau, OnTheMap Application and Longitudinal Employer-Household Dynamics program.

Map Legend

Job Density [Jobs/Sq. Mile]

- 5 - 1,332
- 1,333 - 5,315
- 5,316 - 11,953
- 11,954 - 21,247
- 21,248 - 33,196

Job Count [Jobs/Census Block]

- 1 - 18
- 19 - 274
- 275 - 1,385
- 1,386 - 4,377
- 4,378 - 10,687

Work Area Profile Summary

	Count	Share
Total Primary Jobs	200,614	100.0%
Jobs by Worker Age		
Age 29 or younger	40,269	20.1%
Age 30 to 54	103,624	51.7%
Age 55 or older	56,721	28.3%
Jobs by Earnings		
\$1,250 per month or less	37,981	18.9%
\$1,251 to \$3,333 per month	75,569	37.7%
More than \$3,333 per month	87,064	43.4%
Jobs by NAICS Industry Sector		
Agriculture, Forestry, Fishing and Hunting	200	0.1%
Mining, Quarrying, and Oil and Gas Extraction	28	0.0%
Utilities	293	0.1%
Construction	13,497	6.7%
Manufacturing	24,303	12.1%
Wholesale Trade	4,811	2.4%
Retail Trade	23,927	11.9%
Transportation and Warehousing	3,492	1.7%
Information	2,236	1.1%
Finance and Insurance	4,975	2.5%
Real Estate and Rental and Leasing	2,492	1.2%
Professional, Scientific, and Technical Services	15,077	7.5%
Management of Companies and Enterprises	2,145	1.1%
Administration & Support, Waste Management and Remediation	12,981	6.5%
Educational Services	16,164	8.1%
Health Care and Social Assistance	30,832	15.4%
Arts, Entertainment, and Recreation	3,670	1.8%
Accommodation and Food Services	21,116	10.5%
Other Services (excluding Public Administration)	6,134	3.1%
Public Administration	12,241	6.1%

Source: U.S. Census Bureau, OnTheMap Application and Longitudinal Employer-Household Dynamics program.

Work Area Profile Summary - Demographics

	Count	Share
Jobs by Worker Race		
White Alone	167,104	83.3%
Black or African American Alone	23,162	11.5%
American Indian or Alaska Native Alone	846	0.4%
Asian Alone	5,644	2.8%
Native Hawaiian or Other Pacific Islander Alone	219	0.1%
Two or More Race Groups	3,639	1.8%
Jobs by Worker Ethnicity		
Not Hispanic or Latino	176,342	87.9%
Hispanic or Latino	24,272	12.1%
Jobs by Worker Educational Attainment		
Less than high school	19,710	9.8%
High school or equivalent, no college	43,283	21.6%
Some college or Associate degree	52,409	26.1%
Bachelor's degree or advanced degree	44,943	22.4%
Educational attainment not available (workers aged 29 or younger)	40,269	20.1%
Jobs by Worker Sex		
Male	101,883	50.8%
Female	98,731	49.2%

Source: U.S. Census Bureau, OnTheMap Application and Longitudinal Employer-Household Dynamics program.

Where Workers Live in Brevard County



Source: U.S. Census Bureau, OnTheMap Application and Longitudinal Employer-Household Dynamics program.

Map Legend

Job Density [Jobs/Sq. Mile]

- 5 - 134
- 135 - 521
- 522 - 1,168
- 1,169 - 2,072
- 2,073 - 3,236

Job Count [Jobs/Census Block]

- 1 - 2
- 3 - 21
- 22 - 106
- 107 - 334
- 335 - 815

Home Area Profile Summary

	Count	Share
Total Primary Jobs	223,667	100.0%
Jobs by Worker Age		
Age 29 or younger	45,235	20.2%
Age 30 to 54	114,124	51.0%
Age 55 or older	64,308	28.8%
Jobs by Earnings		
\$1,250 per month or less	43,395	19.4%
\$1,251 to \$3,333 per month	82,840	37.0%
More than \$3,333 per month	97,432	43.6%
Jobs by NAICS Industry Sector		
Agriculture, Forestry, Fishing and Hunting	622	0.3%
Mining, Quarrying, and Oil and Gas Extraction	66	0.0%
Utilities	479	0.2%
Construction	14,688	6.6%
Manufacturing	23,209	10.4%
Wholesale Trade	6,611	3.0%
Retail Trade	26,332	11.8%
Transportation and Warehousing	6,472	2.9%
Information	2,784	1.2%
Finance and Insurance	6,716	3.0%
Real Estate and Rental and Leasing	3,515	1.6%
Professional, Scientific, and Technical Services	17,210	7.7%
Management of Companies and Enterprises	2,846	1.3%
Administration & Support, Waste Management and Remediation	15,880	7.1%
Educational Services	17,358	7.8%
Health Care and Social Assistance	31,479	14.1%
Arts, Entertainment, and Recreation	4,939	2.2%
Accommodation and Food Services	23,529	10.5%
Other Services (excluding Public Administration)	6,946	3.1%
Public Administration	11,986	5.4%

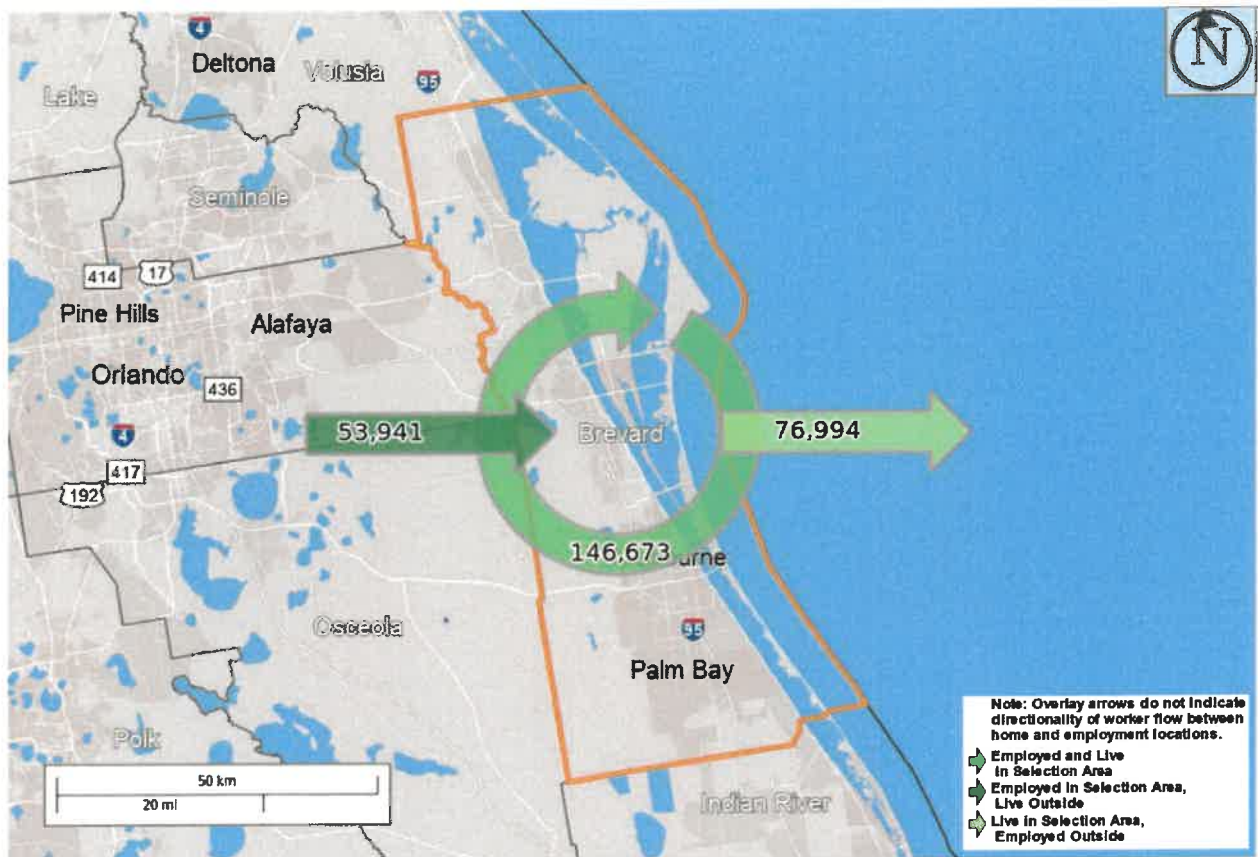
Source: U.S. Census Bureau, OnTheMap Application and Longitudinal Employer-Household Dynamics program.

Home Area Profile Summary - Demographics

	Count	Share
Jobs by Worker Race		
White Alone	188,061	84.1%
Black or African American Alone	24,413	10.9%
American Indian or Alaska Native Alone	911	0.4%
Asian Alone	5,959	2.7%
Native Hawaiian or Other Pacific Islander Alone	237	0.1%
Two or More Race Groups	4,086	1.8%
Jobs by Worker Ethnicity		
Not Hispanic or Latino	201,105	89.9%
Hispanic or Latino	22,562	10.1%
Jobs by Worker Educational Attainment		
Less than high school	21,585	9.7%
High school or equivalent, no college	48,101	21.5%
Some college or Associate degree	58,457	26.1%
Bachelor's degree or advanced degree	50,289	22.5%
Educational attainment not available (workers aged 29 or younger)	45,235	20.2%
Jobs by Worker Sex		
Male	113,774	50.9%
Female	109,893	49.1%

Source: U.S. Census Bureau, OnTheMap Application and Longitudinal Employer-Household Dynamics program.

Labor Inflow/Outflow Map



Source: U.S. Census Bureau, OnTheMap Application and Longitudinal Employer-Household Dynamics program.

Of the 200,614 people who are employed in Brevard County, 146,673 (73.1%) live and work in the county. There are 53,941 (26.9%) workers who live outside Brevard County and work within the county. Of the 223,667 workers who live within Brevard County, 76,994 (34.4%) residents work outside the county. There is a net outflow of -23,053 workers from Brevard County.

Labor Inflow/Outflow Summary

	Count	Share
Brevard County Labor Market Size (Primary Jobs)		
Employed in the Selection Area	200,614	100.0%
Living in the Selection Area	223,667	111.5%
Net Job Inflow (+) or Outflow (-)	-23,053	-
Brevard County Labor Force Efficiency (Primary Jobs)		
Living in the Selection Area	223,667	100.0%
Living and Employed in the Selection Area	146,673	65.6%
Living in the Selection Area but Employed Outside	76,994	34.4%
Brevard County Employment Efficiency (Primary Jobs)		
Employed in the Selection Area	200,614	100.0%
Employed and Living in the Selection Area	146,673	73.1%
Employed in the Selection Area but Living Outside	53,941	26.9%
Outflow Job Characteristics		
External Jobs Filled by Residents	76,994	100.0%
Workers Aged 29 or younger	18,029	23.4%
Workers Aged 30 to 54	38,012	49.4%
Workers Aged 55 or older	20,953	27.2%
Workers Earning \$1,250 per month or less	17,242	22.4%
Workers Earning \$1,251 to \$3,333 per month	27,758	36.1%
Workers Earning More than \$3,333 per month	31,994	41.6%
Workers in the "Goods Producing" Industry Class	9,552	12.4%
Workers in the "Trade, Transportation, and Utilities" Industry Class	22,503	29.2%
Workers in the "All Other Services" Industry Class	44,939	58.4%

Source: U.S. Census Bureau, OnTheMap Application and Longitudinal Employer-Household Dynamics program.

Labor Inflow/Outflow Summary (continued)

	Count	Share
Inflow Job Characteristics (Primary Jobs)		
Internal Jobs Filled by Outside Workers	53,941	100.0%
Workers Aged 29 or younger	13,063	24.2%
Workers Aged 30 to 54	27,512	51.0%
Workers Aged 55 or older	13,366	24.8%
Workers Earning \$1,250 per month or less	11,828	21.9%
Workers Earning \$1,251 to \$3,333 per month	20,487	38.0%
Workers Earning More than \$3,333 per month	21,626	40.1%
Workers in the "Goods Producing" Industry Class	8,995	16.7%
Workers in the "Trade, Transportation, and Utilities" Industry Class	15,132	28.1%
Workers in the "All Other Services" Industry Class	29,814	55.3%
Interior Flow Job Characteristics (Primary Jobs)		
Internal Jobs Filled by Residents	146,673	100.0%
Workers Aged 29 or younger	27,206	18.5%
Workers Aged 30 to 54	76,112	51.9%
Workers Aged 55 or older	43,355	29.6%
Workers Earning \$1,250 per month or less	26,153	17.8%
Workers Earning \$1,251 to \$3,333 per month	55,082	37.6%
Workers Earning More than \$3,333 per month	65,438	44.6%
Workers in the "Goods Producing" Industry Class	29,033	19.8%
Workers in the "Trade, Transportation, and Utilities" Industry Class	17,391	11.9%
Workers in the "All Other Services" Industry Class	100,249	68.3%

Source: U.S. Census Bureau, OnTheMap Application and Longitudinal Employer-Household Dynamics program.

Work Destination Summary

Where Workers are Employed Who Live in Brevard County

	Count	Share
Total Primary Jobs	223,667	100.0%
Job Counts by Counties Where Workers are Employed - Primary Jobs		
Brevard County, FL	146,673	65.6%
Orange County, FL	20,068	9.0%
Hillsborough County, FL	4,842	2.2%
Seminole County, FL	4,780	2.1%
Indian River County, FL	3,941	1.8%
Palm Beach County, FL	3,937	1.8%
Broward County, FL	3,875	1.7%
Duval County, FL	3,698	1.7%
Miami-Dade County, FL	3,481	1.6%
Volusia County, FL	3,465	1.5%
Polk County, FL	2,833	1.3%
Osceola County, FL	2,364	1.1%
Pinellas County, FL	2,137	1.0%
St. Lucie County, FL	1,478	0.7%
Lake County, FL	1,312	0.6%
Lee County, FL	1,229	0.5%
Martin County, FL	956	0.4%
Pasco County, FL	814	0.4%
Sarasota County, FL	802	0.4%
Marion County, FL	773	0.3%
Alachua County, FL	771	0.3%
St. Johns County, FL	725	0.3%
Manatee County, FL	715	0.3%
Leon County, FL	658	0.3%
Okaloosa County, FL	581	0.3%
All Other Locations	6,759	3.0%

Source: U.S. Census Bureau, OnTheMap Application and Longitudinal Employer-Household Dynamics program.

Home Destination Summary

Where Workers Live Who are Employed in Brevard County

	Count	Share
Total Primary Jobs	200,614	100.0%
Job Counts by Counties Where Workers Live - Primary Jobs		
Brevard County, FL	146,673	73.1%
Orange County, FL	8,141	4.1%
Volusia County, FL	3,974	2.0%
Indian River County, FL	3,650	1.8%
Osceola County, FL	3,453	1.7%
Seminole County, FL	2,825	1.4%
Hillsborough County, FL	2,681	1.3%
Palm Beach County, FL	2,512	1.3%
Polk County, FL	2,342	1.2%
Miami-Dade County, FL	2,326	1.2%
Broward County, FL	1,970	1.0%
St. Lucie County, FL	1,917	1.0%
Duval County, FL	1,832	0.9%
Pinellas County, FL	1,807	0.9%
Lake County, FL	1,451	0.7%
Pasco County, FL	1,103	0.5%
Lee County, FL	1,096	0.5%
Martin County, FL	774	0.4%
Marion County, FL	753	0.4%
Sarasota County, FL	687	0.3%
Manatee County, FL	585	0.3%
Collier County, FL	581	0.3%
Okeechobee County, FL	523	0.3%
Clay County, FL	466	0.2%
Flagler County, FL	459	0.2%
All Other Locations	6,033	3.0%

Source: U.S. Census Bureau, OnTheMap Application and Longitudinal Employer-Household Dynamics program.

**Florida Department of Economic Opportunity
Bureau of Workforce Statistics and Economic Research
(WSER)**

**Caldwell Building
MSC G-020
107 E. Madison Street
Tallahassee, Florida 32399-4111
Phone (850) 245-7257**



www.floridajobs.org/labor-market-information